

PROFILE



المعيارية
للصناعات الخرسانية
MODULAR CONCRETE CO.

MARCH 2023

CONTENTS



INTRODUCTION	PAGE 3-6
WHY PRECAST.....	PAGE 7-8
APPLICATIONS.....	PAGE 9
SOLUTIONS.....	PAGE 10-13
THE FACTORY.....	PAGE 14-18
UTILITIES.....	PAGE 19-21

INTRODUCTION



With a promise of bringing innovative modular solutions, Modular Concrete Company is committed to delivering time-saving, cost-effective and sustainable precast products.

Being one of the largest high-end precast concrete producers in the region, MCC is focused on serving large and medium scale construction projects in the Jordanian market & beyond.



INTRODUCTION

Who We Are



MCC IS FULLY OWNED BY THE ECONOMIC & SOCIAL ASSOCIATION FOR RETIRED SERVICEMEN & VETERANS



Our Vision: To be a regional world class leader in the off-site Modular Precast Concrete industry in Jordan and beyond.

Our Mission: To transform the construction industry through designing & manufacturing safe, innovative & sustainable concrete structures in record time, with reasonable cost and superior quality.

Our Values:

We employ our core values towards realizing our vision in a high-performance environment:

- ✓ Pioneering & Progressive
- ✓ Leading & Responsible
- ✓ Visionary & Innovative
- ✓ Skillful & Sustainable
- ✓ Productive & Efficient

INTRODUCTION



In 2022, MCC acquired an advanced precast concrete factory, strategically located at Qasr Al Hallabat Free Zone Industrial Area near Zarqa Free Zone.



Equipped with advanced German manufacturing technology, MCC Factory is one of the leading & largest precast concrete factories in the region.

INTRODUCTION



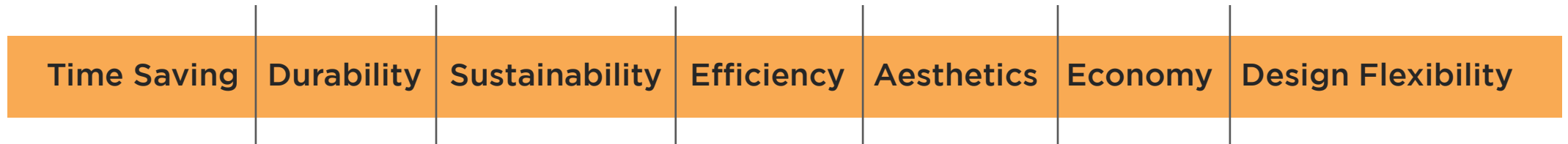
The company specializes in manufacturing and producing a variety of precast concrete solutions including structural, infrastructural and architectural products, coupled with fabricating and assembling various types of construction steel products.



WHY MODULAR PRECAST?



Modular is the future of construction, and MCC's modular approach will constitute a qualitative leap in the Jordanian construction market, through providing large construction projects with high-end products, in record time and at convenient cost.



Manufacturing in controlled and safe environments increases precision and productivity, allows for efficient scheduling, leads to cost savings, and assures dramatic waste reduction.

WHY PRECAST



MODULAR CONSTRUCTION TIMELINE



CONVENTIONAL CONSTRUCTION TIMELINE



APPLICATIONS



MCC delivers Design-Manufacture-Build Solutions to cater for large-scale core and shell structure projects using load-bearing and non-load bearing wall and ceiling panels.

Industrial buildings

High, medium & low-end villas & housing compounds

Public facilities (schools, hospitals, hotels ...)

Boundary walls (Borders, fences, armed ballistic bunkers, etc.).



SOLUTIONS

Structural Precast Products



- Load-baring Walls
- Non-load bearing Walls
- Retaining Walls
- Boundary Walls
- Sandwich Panels
- Precast Concrete Truss



SOLUTIONS

Infrastructure Precast Products



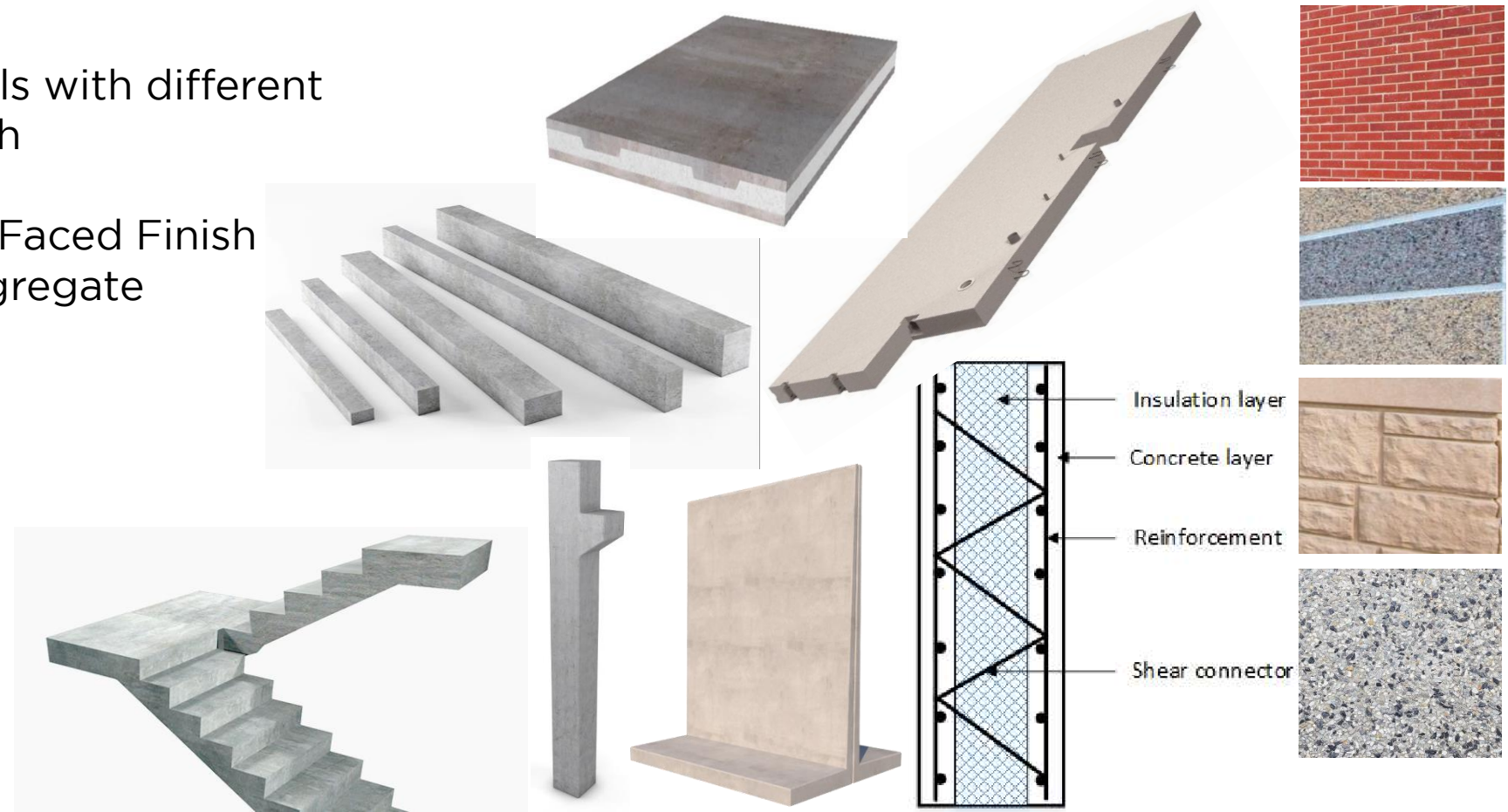
- Road Barriers
- Trenches
- Trench Covers
- Manholes
- Wheel Stoppers
- Water Tanks



SOLUTIONS

Architectural Precast Products

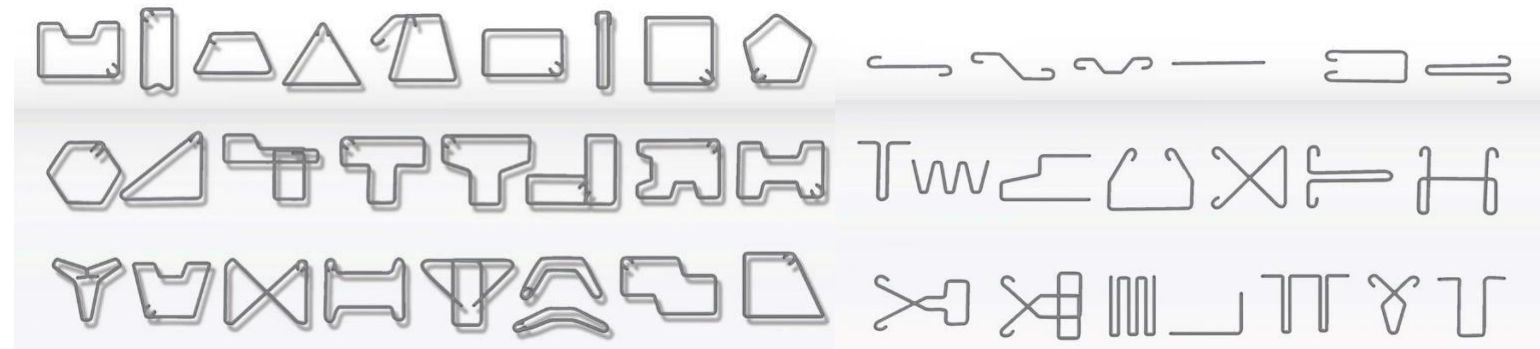
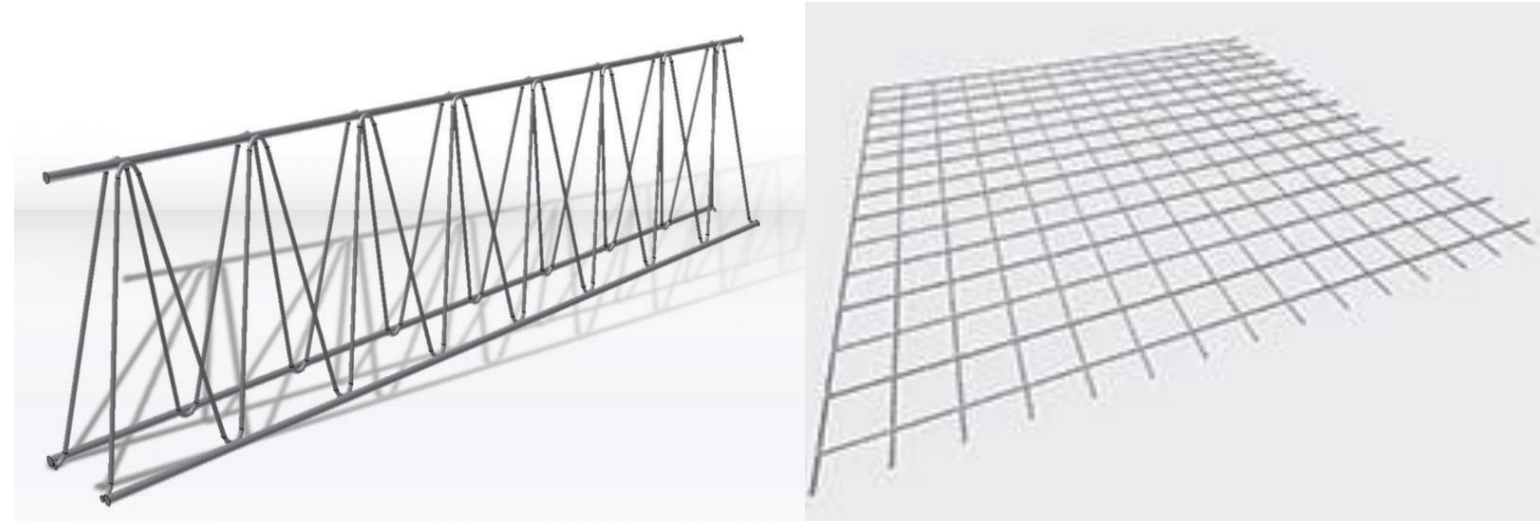
- Cladding walls with different types of finish
- Sandblast
- Colored Fair Faced Finish
- Exposed Aggregate
- Form Linear
- Footings
- Columns
- Beams
- Walls
- Stairs
- Slabs



SOLUTIONS

Steel Fabrication Products

- ❑ Welded Wire Mesh
- ❑ Lattice Girder
- ❑ Rebar Stirrup

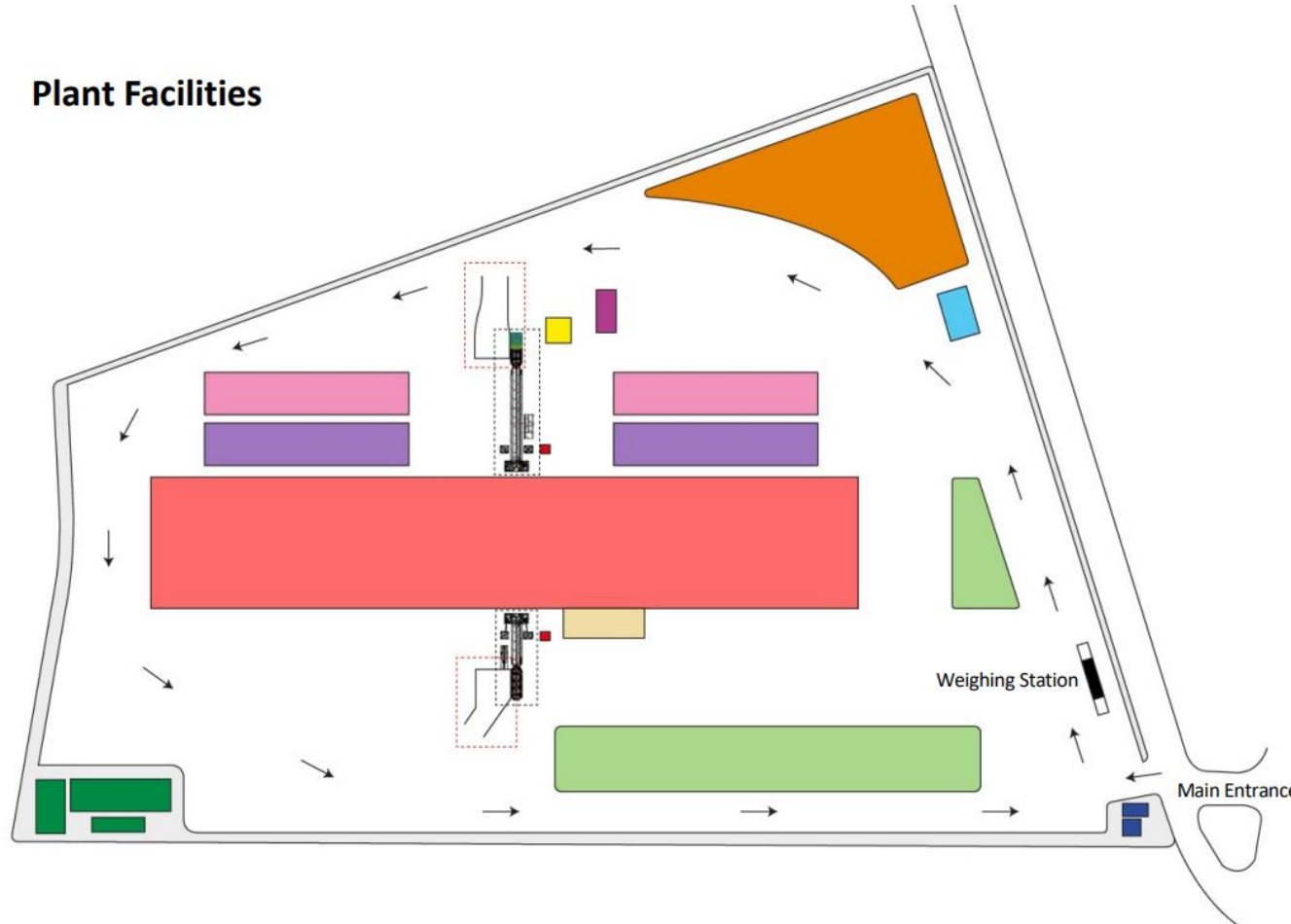


THE FACTORY

Plant Facilities



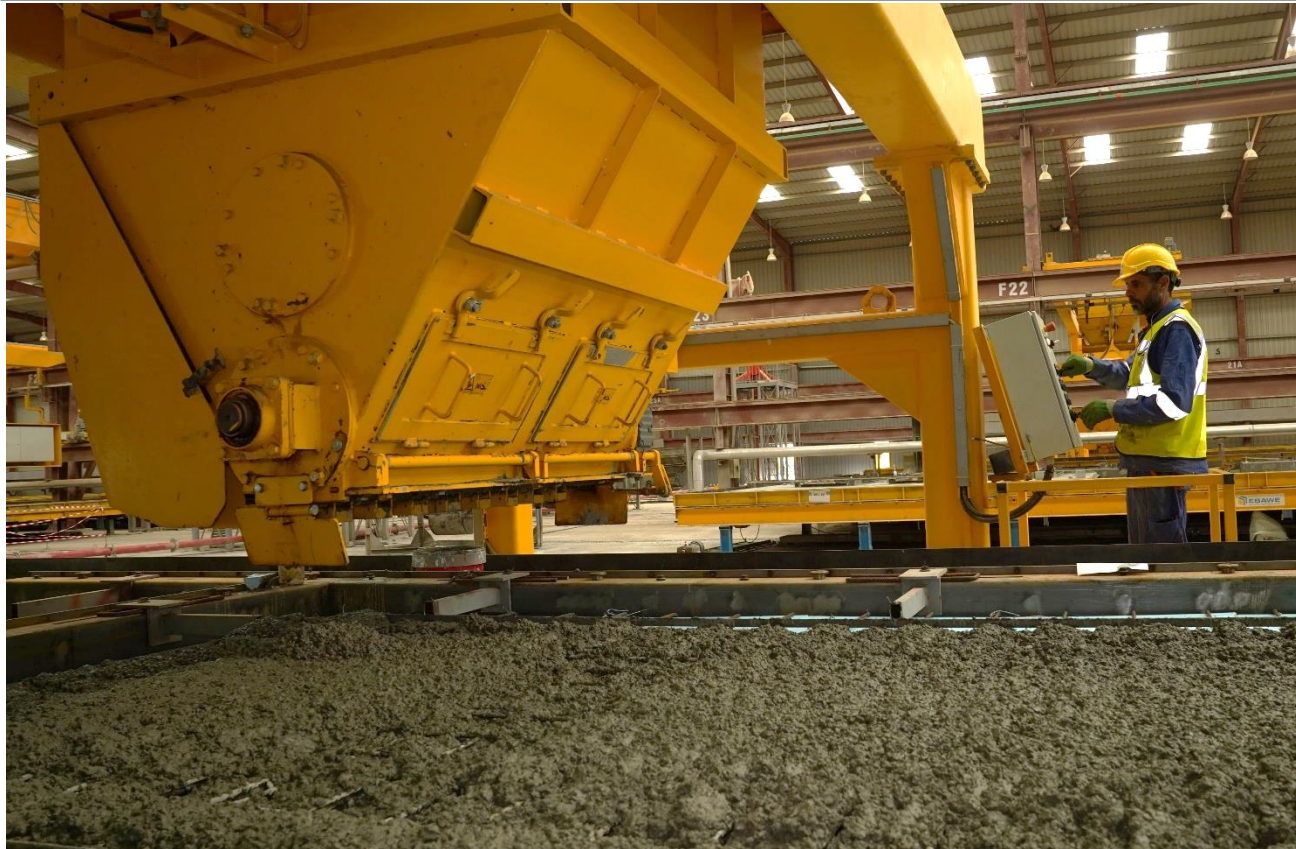
Plant Facilities



- Main Building / Concrete Factory
- Steel Factory / Assembly
- Steel Factory / Fabrication
- Service
- Service
- Administration Building
- Demo Building
- Accommodation Building
- Security
- Landscaping
- Control Station
- Temporary Unloading Storage Area
- Aggregate Storage Area
- Concrete Mixer

THE FACTORY

Modern Technology



Deploying digital machinery and design capabilities, MCC's Factory employs modern production technologies to optimize accuracy and productivity in manufacturing and installation logistics, in accordance with latest international standards.

THE FACTORY

Production Lines



- ❑ 8 independent production lines with 16 casting vibratory tables.
 - Each has a length of 15.6 meters and width of 4 meters
 - Total number of tables 128
- ❑ 10 x 10 ton x 30 meter span each overhead cranes in the casting facility
- ❑ 8 x 10 ton x 25 meter span each overhead cranes in the steel fabrication facilities

THE FACTORY

Mixers

- ❑ Serviced by four (4) concrete batching plants
 - Capability of 100 m³/hour/plant each: total 400 m³/hour
 - Turbo/multi head type planetary mixers suitable for ultra high performance concrete
 - Fully computerized
 - Three (3) special additive units
 - 2 plants for coloring by using special pigments



THE FACTORY

Steel Plant

- ❑ Capability of producing lattice girders, steel mesh, steel connectors, etc. made up of 2 fully-automated lattice girder lines in addition to sterups machines, form and connector machines all using steel coils up to 16mm in diameter and a steel mesh line.
- ❑ Two (2) cage fabrication facilities complete with welding systems, roller tables, etc. Building size 5,000 m²
- ❑ Capacity based on full load of all casting tables in 8 hours, using proprietary reinforcement system.



UTILITIES

Support Facilities

- ❑ 2 large steam plants that supply the entire casting area with constant steam for curing purposes, and a complete network of 3,000 meters of seam lines.
- ❑ A complete water treatment and desalination system feeding the steam and concrete facilities.
- ❑ A complete air plant and plant, instrument, and service air network of more than 5,000 meters distributed to all machinery in the factory.
- ❑ 5 megawatt electrical substation feeding all sectors in the different facilities.
- ❑ Complete laboratory facility for testing steel & both fresh & hardened concrete products.



UTILITIES

Operations & logistics

- ❑ On-site weigh station for trucks with a capacity of 80 tons.
- ❑ Loading/unloading accomplished using high-capacity mobile forklifts



MODULAR
CONCRETE CO.



المعيارية
للصناعات الخرسانية

Modular Concrete Company (Free Zones)
Al Hallabat Industrial Area - Zarqa / info@modularcc.com
T:+962 7 9632 0003 / P.O. Box 840210 Amman 11184-Jordan
www.modularcc.com